

IT CABINETS



DESCRIPTION CABINET:

HYPERACK line data communication cabinets are universal indoor enclosures for telecommunications and IT applications. Flexible configuration allows for using a cabinet as a standard 19" rack for network devices as well as a cable or even fiber optics main frame. You can easily customize a cabinet for mixed applications such as data transmission and power management. Wide variety of dimensions and mechanical properties make this model one of the best solutions available on the market. The cabinets has IP 20 protection degree.

CONFIGURATION:

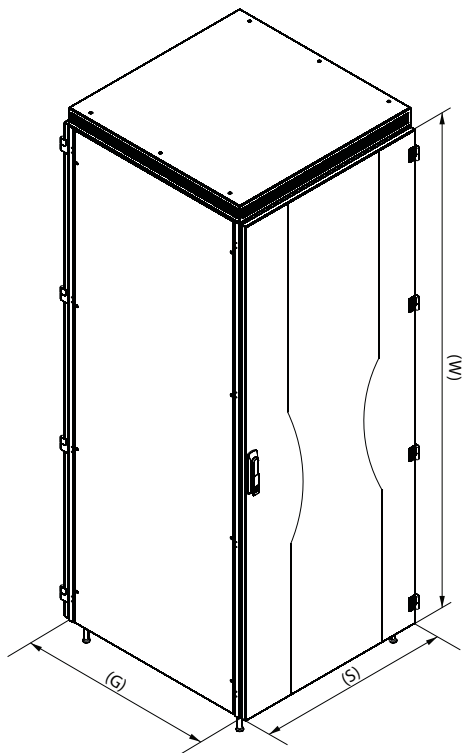
1. Max. load up to 1200kg
2. 19" mounting profiles with adjustable depth
3. Glazed, perforated or steel left/right door with a multipoint lock
4. Side walls are mounted using single-point locks or screws
5. High roof with side perforation
6. Cabinets are installed directly on levelling feet, a plinth or caster wheels
7. Grounding rail and cables of all elements from standard equipment
8. Surface finish: all metal parts are phosphatized and coated with fine-grain RAL 9005 (black) or RAL 7035 (grey) powder
9. Optional fans provide additional ventilation

TECHNICAL DATA:

Construction: steel, screwed

Material: steel sheets #2MM

Surface finishing: all metal parts are phosphatized and coated with fine-grain powder



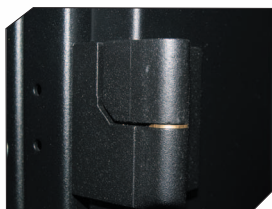
Construction details



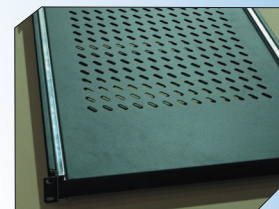
New, universal type of frame profile



Height of useable space up to 47U



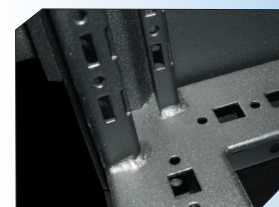
High quality of workmanship



Possible equipment in accessories



Possible installation of 19" and 21" devices



Welded construction with loading capacity up to 1200 kg

Table of pre-configured 24U data communication cabinets

| Dimensions | | | | | | | | | Page of catalogue |
|--|----------|----------|----------|----------|----------|----------|----------|----------|-------------------|
| Usable height (U) | 24U | | 24U | | 24U | | 24U | | 112 |
| Width (W) mm | 600 | | 600 | | 800 | | 800 | | |
| Height (H) mm | 1200 | | 1200 | | 1200 | | 1200 | | |
| Depth (D) mm | 600 | | 800 | | 600 | | 800 | | |
| Load capacity (kg) | 1200 | | 1200 | | 1200 | | 1200 | | |
| Colour | RAL7035 | RAL9005 | RAL7035 | RAL9005 | RAL7035 | RAL9005 | RAL7035 | RAL9005 | |
| Catalogue Number | NG516126 | NG526126 | NG516128 | NG526128 | NG518126 | NG528126 | NG518128 | NG528128 | |
| Frame | | | | | | | | | |
| Welded frame | | | | | | | | | |
| Doors | | | | | | | | | |
| Solid glazed front door (B model) | | | | | | | | | |
| Perforated steel door (front or back) | NG092612 | NG102612 | NG092612 | NG102612 | NG092812 | NG102812 | NG092812 | NG102812 | 135 |
| Solid steel rear door | | | | | | | | | |
| Full glass door (A model) | NG091612 | NG101612 | NG091612 | NG101612 | NG091812 | NG101812 | NG091812 | NG101812 | 135 |
| Side walls | | | | | | | | | |
| Attachable side walls with a pin tumbler lock | | | | | | | | | |
| Screw-fastened side walls | NG060126 | NG061126 | NG060128 | NG061128 | NG060126 | NG061126 | NG060128 | NG061128 | 139 |
| Attachable, perforated side walls with a pin tumbler lock | NG066126 | NG067126 | NG066128 | NG067128 | NG066126 | NG067126 | NG066128 | NG067128 | 141 |
| A kit for arranging cabinets in rows | NG200000 | NG200000 | NG200000 | NG200000 | NG200000 | NG200000 | NG200000 | NG200000 | 167 |
| Top panel assembly | | | | | | | | | |
| Solid metal sheet top panel | NG070066 | NG071066 | NG070068 | NG071068 | NG070086 | NG071086 | NG070088 | NG071088 | 143 |
| Top panel mounting distance 30mm | NG079030 | NG079030 | NG079030 | NG079030 | NG079030 | NG079030 | NG079030 | NG079030 | 167 |
| Solid metal sheet top panel with a brush strip panel | NG070160 | NG071160 | NG070180 | NG071180 | NG070160 | NG071160 | NG070180 | NG071180 | 143 |
| High, side-perforated top panel | | | | | | | | | |
| High, side-perforated top panel with a brush strip panel | NG070366 | NG071366 | NG070368 | NG071368 | NG070386 | NG071386 | NG070388 | NG071388 | 144 |
| Fan tray without accessories | NG070468 | NG071468 | NG070488 | NG071488 | NG070468 | NG071468 | NG070488 | NG071488 | 145 |
| Fan for tray mounting 230V | KA200000 | KA200000 | KA200000 | KA200000 | KA200000 | KA200000 | KA200000 | KA200000 | 146 |
| Closing thermostat | KA100010 | KA100010 | KA100010 | KA100010 | KA100010 | KA100010 | KA100010 | KA100010 | 169 |
| Plinth/Bottom panel | | | | | | | | | |
| Plinth (front and back), solid, 100 mm | NG190061 | NG191061 | NG190061 | NG191061 | NG190081 | NG191081 | NG190081 | NG191081 | 148 |
| Plinth (front and back), perforated, 100 mm | NG190161 | NG191161 | NG190161 | NG191161 | NG190181 | NG191181 | NG190181 | NG191181 | |
| Plinth side panels, solid, 100 mm, 2 pcs | NG195061 | NG196061 | NG195081 | NG196081 | NG195061 | NG196061 | NG195081 | NG196081 | 149 |
| Plinth side panels, perforated, 100 mm, 2 pcs | NG195161 | NG196161 | NG195181 | NG196181 | NG195161 | NG196161 | NG195181 | NG196181 | |
| Plinth side panels with a brush strip panel, 100 mm | NG195261 | NG196261 | NG195281 | NG196281 | NG195261 | NG196261 | NG195281 | NG196281 | |
| Solid metal sheet trisectional bottom panel with a brush strip panel | | | | | | | | | |
| Perforated metal sheet for a trisectional bottom panel | NG080306 | NG080306 | NG080306 | NG080306 | NG080308 | NG080308 | NG080308 | NG080308 | 147 |
| Levelling feet - 4 pcs | | | | | | | | | |
| Transporting rolls - 4 pcs | NA190010 | NA190010 | NA190010 | NA190010 | NA190010 | NA190010 | NA190010 | NA190010 | 150 |
| Internal installation/Accessories | | | | | | | | | |
| 19" B-type mounting profiles, 4 pcs. | | | | | | | | | |
| Outriggers for mounting profile assembly, 4 pcs. | | | | | | | | | |
| Grounding bar with cables | | | | | | | | | |
| 2U shelf of 450mm depth | NA050002 | NA050502 | NA050002 | NA050502 | NA050002 | NA050502 | NA050002 | NA050502 | 160 |
| Adjustable shelf 485 - 850mm | NA055051 | NA055551 | NA055051 | NA055551 | NA055051 | NA055551 | NA055051 | NA055551 | 151 |
| Cable organizer support | NG160226 | NG160236 | NG160226 | NG160236 | NG160228 | NG160238 | NG160228 | NG160238 | 164 |
| Cable eyes panel | NA080015 | NA080515 | NA080015 | NA080515 | NA080015 | NA080515 | NA080015 | NA080515 | 163 |
| 9 sockets power-strip | NA220009 | NA220009 | NA220009 | NA220009 | NA220009 | NA220009 | NA220009 | NA220009 | 167 |
| 8 sockets power-strip with illuminated switcher | NA220108 | NA220108 | NA220108 | NA220108 | NA220108 | NA220108 | NA220108 | NA220108 | |



Additional information:

- standard equipment of a pre-configured cabinet.

Dimensions not included in the table and other powder colours are delivered as an individual order after prior consultation.

Enclosures are delivered fully assembled.

Table of pre-configured 42U data communication cabinets

| Dimensions | | | | | | | | | Page of catalogue |
|--|----------|----------|----------|----------|----------|----------|----------|----------|-------------------|
| Usable height (U) | 42 | | 42 | | 42 | | 42 | | 112 |
| Width (W) mm | 600 | | 600 | | 800 | | 800 | | |
| Height (H) mm | 2000 | | 2000 | | 2000 | | 2000 | | |
| Depth (D) mm | 600 | | 800 | | 600 | | 800 | | |
| Load capacity (kg) | 1200 | | 1200 | | 1200 | | 1200 | | |
| Colour | RAL7035 | RAL9005 | RAL7035 | RAL9005 | RAL7035 | RAL9005 | RAL7035 | RAL9005 | |
| Catalogue Number | NG516206 | NG526206 | NG516208 | NG526208 | NG518206 | NG528206 | NG518208 | NG528208 | |
| Frame | | | | | | | | | |
| Welded frame | | | | | | | | | |
| Doors | | | | | | | | | |
| Solid glazed front door (B model) | | | | | | | | | |
| Perforated steel door (front or back) | NG092620 | NG102620 | NG092620 | NG102620 | NG092820 | NG102820 | NG092820 | NG102820 | 135 |
| Perforated door sectional vertically | NG142620 | NG147620 | NG142620 | NG147620 | NG142820 | NG147820 | NG142820 | NG147820 | 137 |
| Solid steel rear door | | | | | | | | | |
| Full glass door (A model) | NG091620 | NG101620 | NG091620 | NG101620 | NG091820 | NG101820 | NG091820 | NG101820 | 135 |
| Side walls | | | | | | | | | |
| Attachable side walls with a pin tumbler lock | | | | | | | | | |
| Screw-fastened side walls | NG060206 | NG061206 | NG060208 | NG061208 | NG060206 | NG061206 | NG060208 | NG061208 | 139 |
| Attachable, perforated side walls with a pin tumbler lock | NG066206 | NG067206 | NG066208 | NG067208 | NG066206 | NG067206 | NG066208 | NG067208 | 141 |
| A kit for arranging cabinets in rows | NG200000 | NG200000 | NG200000 | NG200000 | NG200000 | NG200000 | NG200000 | NG200000 | 167 |
| Top panel assembly | | | | | | | | | |
| Solid metal sheet top panel | NG070066 | NG071066 | NG070068 | NG071068 | NG070086 | NG071086 | NG070088 | NG071088 | 143 |
| Top panel mounting distance 30mm | NG079030 | NG079030 | NG079030 | NG079030 | NG079030 | NG079030 | NG079030 | NG079030 | 167 |
| Solid metal sheet top panel with a brush strip panel | NG070166 | NG071166 | NG070168 | NG071168 | NG070186 | NG071186 | NG070188 | NG071188 | 143 |
| High, side-perforated top panel | | | | | | | | | |
| High, side-perforated top panel with a brush strip panel | NG070366 | NG071366 | NG070368 | NG071368 | NG070386 | NG071386 | NG070388 | NG071388 | 144 |
| Fan tray without accessories | NG070466 | NG071466 | NG070468 | NG071468 | NG070486 | NG071486 | NG070488 | NG071488 | 145 |
| Fan for tray mounting 230V | KA200000 | KA200000 | KA200000 | KA200000 | KA200000 | KA200000 | KA200000 | KA200000 | 146 |
| Closing thermostat | KA100010 | KA100010 | KA100010 | KA100010 | KA100010 | KA100010 | KA100010 | KA100010 | 169 |
| Plinth/Bottom panel | | | | | | | | | |
| Plinth (front and back), solid, 100 mm | NG190061 | NG191061 | NG190061 | NG191061 | NG190081 | NG191081 | NG190081 | NG191081 | 148 |
| Plinth (front and back), perforated, 100 mm | NG190161 | NG191161 | NG190161 | NG191161 | NG190181 | NG191181 | NG190181 | NG191181 | |
| Plinth side panels, solid, 100 mm, 2 pcs | NG195061 | NG196061 | NG195081 | NG196081 | NG195061 | NG196061 | NG195081 | NG196081 | 149 |
| Plinth side panels, perforated, 100 mm, 2 pcs | NG195161 | NG196161 | NG195181 | NG196181 | NG195161 | NG196161 | NG195181 | NG196181 | |
| Plinth side panels with a brush strip panel, 100 mm | NG195261 | NG196261 | NG195281 | NG196281 | NG195261 | NG196261 | NG195281 | NG196281 | |
| Solid metal sheet trisectional bottom panel with a brush strip panel | | | | | | | | | |
| Perforated metal sheet for a trisectional bottom panel | NG080306 | NG080306 | NG080306 | NG080306 | NG080308 | NG080308 | NG080308 | NG080308 | 147 |
| Levelling feet – 4 pcs | | | | | | | | | |
| Transporting rolls – 4 pcs | NA190010 | NA190010 | NA190010 | NA190010 | NA190010 | NA190010 | NA190010 | NA190010 | 150 |
| Internal installation/Accessories | | | | | | | | | |
| 19" B-type mounting profiles, 4 pcs. | | | | | | | | | |
| Outriggers for mounting profile assembly, 4 pcs. | | | | | | | | | |
| Grounding bar with cables | | | | | | | | | |
| 2U shelf of 450mm depth | NA050002 | NA050502 | NA050002 | NA050502 | NA050002 | NA050502 | NA050002 | NA050502 | 160 |
| Adjustable shelf 485 - 850mm | NA055051 | NA055551 | NA055051 | NA055551 | NA055051 | NA055551 | NA055051 | NA055551 | 151 |
| Cable organizer support | NG160226 | NG160236 | NG160226 | NG160236 | NG160228 | NG160228 | NG160228 | NG160228 | 164 |
| Cable eyes panel | NA080015 | NA080515 | NA080015 | NA080515 | NA080015 | NA080515 | NA080015 | NA080515 | 163 |
| 9 sockets power-strip | NA220009 | NA220009 | NA220009 | NA220009 | NA220009 | NA220009 | NA220009 | NA220009 | 167 |
| 8 sockets power-strip with illuminated switcher | NA220108 | NA220108 | NA220108 | NA220108 | NA220108 | NA220108 | NA220108 | NA220108 | |



Additional information:

- standard equipment of a pre-configured cabinet.

Dimensions not included in the table and other powder colours are delivered as an individual order after prior consultation. Enclosures are delivered fully assembled.

Table of pre-configured 47U data communication cabinets

| Dimensions | | | | | | | | | Page of catalogue |
|--|----------|----------|----------|----------|----------|----------|----------|----------|-------------------|
| Usable height (U) | 47 | | 47 | | 47 | | 47 | | 112 |
| Width (W) mm | 600 | | 600 | | 800 | | 800 | | |
| Height (H) mm | 2200 | | 2200 | | 2200 | | 2200 | | |
| Depth (D) mm | 600 | | 800 | | 600 | | 800 | | |
| Load capacity (kg) | 1200 | | 1200 | | 1200 | | 1200 | | |
| Colour | RAL7035 | RAL9005 | RAL7035 | RAL9005 | RAL7035 | RAL9005 | RAL7035 | RAL9005 | |
| Catalogue Number | NG516226 | NG526226 | NG516228 | NG526228 | NG518226 | NG528226 | NG518228 | NG528228 | |
| Frame | | | | | | | | | |
| Welded frame | | | | | | | | | |
| Doors | | | | | | | | | |
| Solid glazed front door (B model) | | | | | | | | | |
| Perforated steel door (front or back) | NG092622 | NG102622 | NG092622 | NG102622 | NG092822 | NG102822 | NG092822 | NG102822 | 135 |
| Perforated door sectional vertically | NG142622 | NG147622 | NG142622 | NG147622 | NG142822 | NG147822 | NG142822 | NG147822 | 137 |
| Solid steel rear door | | | | | | | | | |
| Full glass door (A model) | NG091622 | NG101622 | NG091622 | NG101622 | NG091822 | NG101822 | NG091822 | NG101822 | 135 |
| Side walls | | | | | | | | | |
| Attachable side walls with a pin tumbler lock | | | | | | | | | |
| Screw-fastened side walls | NG060226 | NG061226 | NG060228 | NG061228 | NG060226 | NG061226 | NG060228 | NG061228 | 139 |
| Attachable, perforated side walls with a pin tumbler lock | NG066226 | NG067226 | NG066228 | NG067228 | NG066226 | NG067226 | NG066228 | NG067228 | 141 |
| A kit for arranging cabinets in rows | NG200000 | NG200000 | NG200000 | NG200000 | NG200000 | NG200000 | NG200000 | NG200000 | 167 |
| Top panel assembly | | | | | | | | | |
| Solid metal sheet top panel | NG070066 | NG071066 | NG070068 | NG071068 | NG070086 | NG071086 | NG070088 | NG071088 | 143 |
| Top panel mounting distance 30mm | NG079030 | NG079030 | NG079030 | NG079030 | NG079030 | NG079030 | NG079030 | NG079030 | 167 |
| Solid metal sheet top panel with a brush strip panel | NG070166 | NG071166 | NG070168 | NG071168 | NG070186 | NG071186 | NG070188 | NG071188 | 143 |
| High, side-perforated top panel | | | | | | | | | |
| High, side-perforated top panel with a brush strip panel | NG070366 | NG071366 | NG070368 | NG071368 | NG070386 | NG071386 | NG070388 | NG071388 | 144 |
| Fan tray without accessories | NG070466 | NG071466 | NG070468 | NG071468 | NG070486 | NG071486 | NG070488 | NG071488 | 145 |
| Fan for tray mounting 230V | KA200000 | KA200000 | KA200000 | KA200000 | KA200000 | KA200000 | KA200000 | KA200000 | 146 |
| Closing thermostat | KA100010 | KA100010 | KA100010 | KA100010 | KA100010 | KA100010 | KA100010 | KA100010 | 169 |
| Plinth/Bottom panel | | | | | | | | | |
| Plinth (front and back), solid, 100 mm | NG190061 | NG191061 | NG190061 | NG191061 | NG190081 | NG191081 | NG190081 | NG191081 | 148 |
| Plinth (front and back), perforated, 100 mm | NG190161 | NG191161 | NG190161 | NG191161 | NG190181 | NG191181 | NG190181 | NG191181 | |
| Plinth side panels, solid, 100 mm, 2 pcs | NG195061 | NG196061 | NG195081 | NG196081 | NG195061 | NG196061 | NG195081 | NG196081 | 149 |
| Plinth side panels, perforated, 100 mm, 2 pcs | NG195161 | NG196161 | NG195181 | NG196181 | NG195161 | NG196161 | NG195181 | NG196181 | |
| Plinth side panels with a brush strip panel, 100 mm | NG195261 | NG196261 | NG195281 | NG196281 | NG195261 | NG196261 | NG195281 | NG196281 | |
| Solid metal sheet trisectional bottom panel with a brush strip panel | | | | | | | | | |
| Perforated metal sheet for a trisectional bottom panel | NG080306 | NG080306 | NG080306 | NG080306 | NG080308 | NG080308 | NG080308 | NG080308 | 147 |
| Levelling feet - 4 pcs | | | | | | | | | |
| Transporting rolls - 4 pcs | NA190010 | NA190010 | NA190010 | NA190010 | NA190010 | NA190010 | NA190010 | NA190010 | 150 |
| Internal installation/Accessories | | | | | | | | | |
| 19" B-type mounting profiles, 4 pcs. | | | | | | | | | |
| Outriggers for mounting profile assembly, 4 pcs. | | | | | | | | | |
| Grounding bar with cables | | | | | | | | | |
| 2U shelf of 450mm depth | NA050002 | NA050502 | NA050002 | NA050502 | NA050002 | NA050502 | NA050002 | NA050502 | 160 |
| Adjustable shelf 485 - 850mm | NA055051 | NA055551 | NA055051 | NA055551 | NA055051 | NA055551 | NA055051 | NA055551 | 151 |
| Cable organizer support | NG160226 | NG160226 | NG160226 | NG160226 | NG160228 | NG160228 | NG160228 | NG160228 | 164 |
| Cable eyes panel | NA080015 | NA080515 | NA080015 | NA080515 | NA080015 | NA080515 | NA080015 | NA080515 | 163 |
| 9 sockets power-strip | NA220009 | NA220009 | NA220009 | NA220009 | NA220009 | NA220009 | NA220009 | NA220009 | 167 |
| 8 sockets power-strip with illuminated switcher | NA220108 | NA220108 | NA220108 | NA220108 | NA220108 | NA220108 | NA220108 | NA220108 | |



Additional information:

- standard equipment of a pre-configured cabinet.

Dimensions not included in the table and other powder colours are delivered as an individual order after prior consultation. Enclosures are delivered fully assembled.